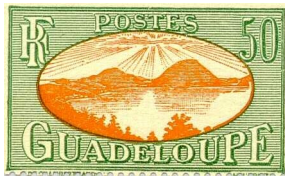


## ALBUM COVERS

**PRINTING:** The components of this cover are contained in pages 2-4 of this file. Page 2 is the front, page 3 is the back, and page 4 is the spine insert. The graphics will look better printed than they appear displayed in Adobe Acrobat, so don't be concerned if they look a little "low res" on your screen.

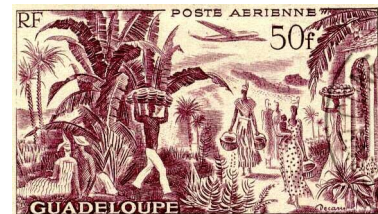
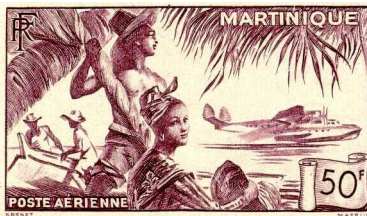
**USAGE:** The front and back inserts are pretty obvious - just print them off and insert them in the clear pockets of an insert binder. The spine is a little trickier. Figuring out how to cut it out to leave the right amount of white space on either side of the border takes some practice. I suggest you print the spine out in black and white to practice on until you figure it out to conserve your color ink cartridge. If you're using a 1" binder, you may need to actually cut off the left and right borders to get the spine insert to fit - it still looks good this way, probably better than with a very small white margin.

**RECOMMENDATION:** You can use almost any size insert binders, but I think the covers will look best in 1 1/2" or 2" binders.

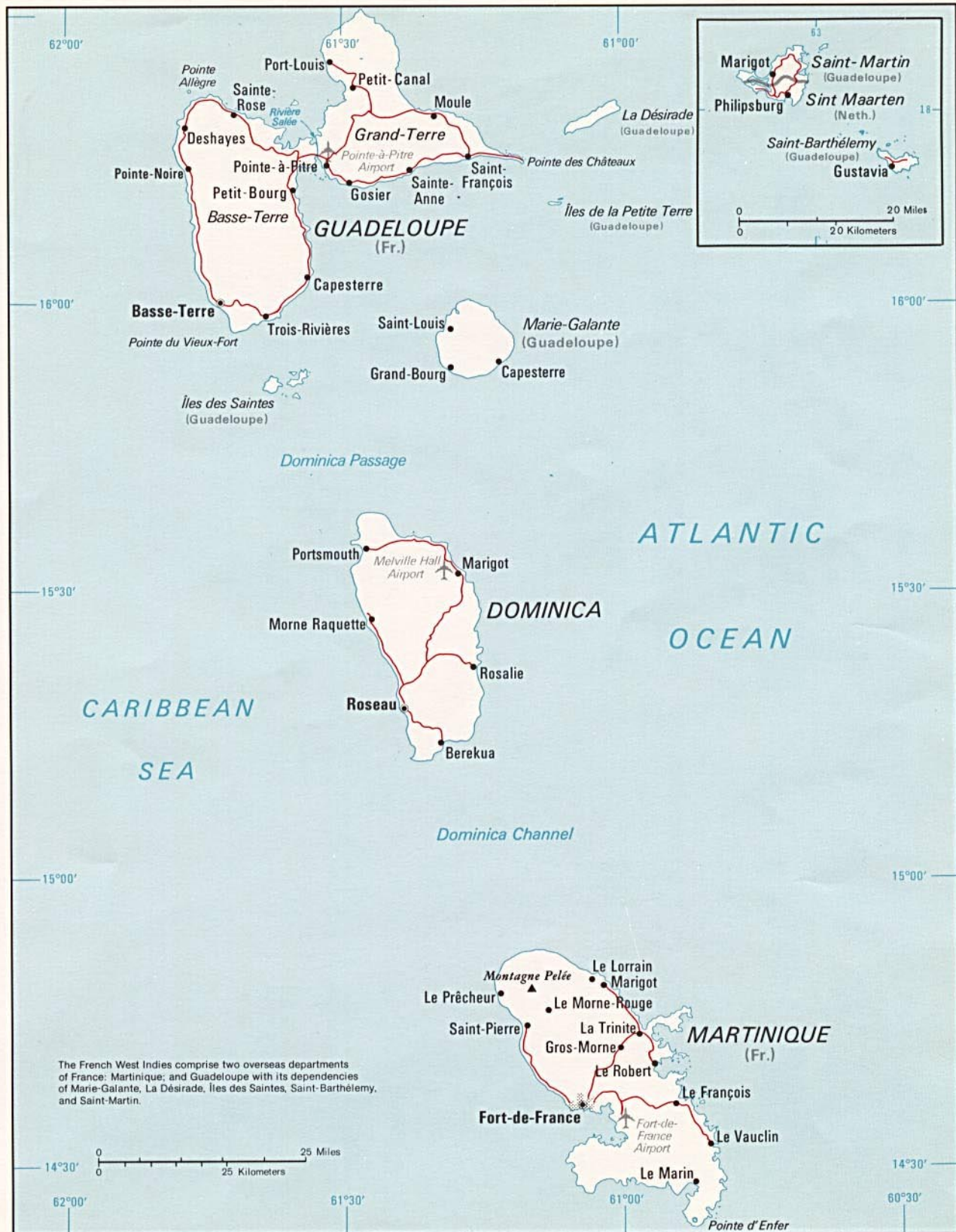


# Guadeloupe & Martinique

Specialty Stamp Album



# Dominica, Guadeloupe, and Martinique



502491 1-76 (541881)  
 Lambert Conformal Projection  
 Standard parallels 14°40' and 16°10'  
 Scale 1:1,100,000

— Road  
 ✈ Airport



G  
U  
A  
D  
E  
L  
O  
U  
P  
E  
&  
M  
A  
R  
T  
I  
N  
I  
Q  
U  
E

