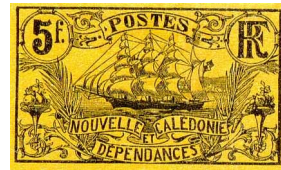


ALBUM COVERS

PRINTING: The components of this cover are contained in pages 2-4 of this file. Page 2 is the front, page 3 is the back, and page 4 is the spine insert. The graphics will look better printed than they appear displayed in Adobe Acrobat, so don't be concerned if they look a little "low res" on your screen.

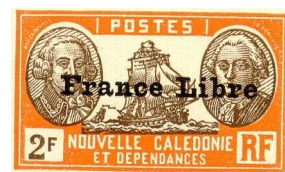
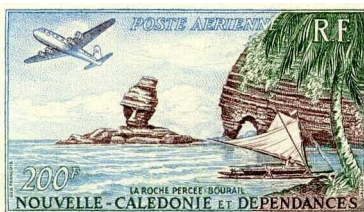
USAGE: The front and back inserts are pretty obvious - just print them off and insert them in the clear pockets of an insert binder. The spine is a little trickier. Figuring out how to cut it out to leave the right amount of white space on either side of the border takes some practice. I suggest you print the spine out in black and white to practice on until you figure it out to conserve your color ink cartridge. If you're using a 1" binder, you may need to actually cut off the left and right borders to get the spine insert to fit - it still looks good this way, probably better than with a very small white margin.

RECOMMENDATION: You can use almost any size insert binders, but I think the covers will look best in 1 1/2" or 2" binders.



New Caledonia and Dependencies

Specialty Stamp Album



New Caledonia





N
E
W

C
A
L
E
D
O
N
I
A

